

## Product datasheet for **TA334903**

### **C9orf128 (FAM221B) Rabbit Polyclonal Antibody**

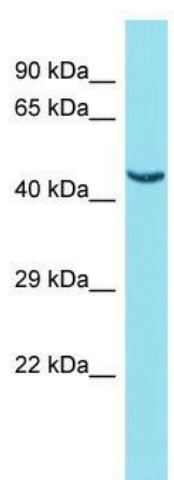
#### **Product data:**

Product Type:	Primary Antibodies
Applications:	WB
Recommended Dilution:	WB
Reactivity:	Human
Host:	Rabbit
Isotype:	IgG
Clonality:	Polyclonal
Immunogen:	The immunogen for anti-FAM221B antibody is synthetic peptide directed towards the middle region of Human FAM221B. Synthetic peptide located within the following region: SLPEHCLSGPSSQVQVDTTEKQEEEAGEVEKGVDASDSTAHTAQPQHQLG
Formulation:	Liquid. Purified antibody supplied in 1x PBS buffer with 0.09% (w/v) sodium azide and 2% sucrose.
Purification:	Affinity Purified
Conjugation:	Unconjugated
Storage:	Store at -20°C as received.
Stability:	Stable for 12 months from date of receipt.
Predicted Protein Size:	45 kDa
Gene Name:	family with sequence similarity 221 member B
Database Link:	<a href="#">NP_001012448</a> <a href="#">Entrez Gene 392307 Human</a> <a href="#">A6H8Z2</a>
Background:	The function of this protein remains unknown.
Synonyms:	C9orf128
Note:	Immunogen Sequence Homology: Human: 100%



[View online »](#)

## Product images:



Host: Rabbit; Target Name: FAM221B; Sample  
Tissue: HepG2 Whole Cell lysates; Antibody  
Dilution: 1.0 ug/ml