

Product datasheet for **TA334895**

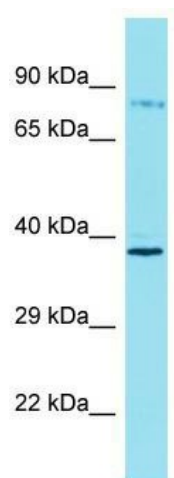
ARHGEF37 Rabbit Polyclonal Antibody

Product data:

Product Type:	Primary Antibodies
Applications:	WB
Recommended Dilution:	WB
Reactivity:	Human
Host:	Rabbit
Isotype:	IgG
Clonality:	Polyclonal
Immunogen:	The immunogen for anti-ARHGEF37 antibody is: synthetic peptide directed towards the C-terminal region of Human ARHGEF37. Synthetic peptide located within the following region: VIAAYPFVARSSHEVSLQAGQPVTILEAQDKKGNPEWSLVEVNGQRGYVP
Formulation:	Liquid. Purified antibody supplied in 1x PBS buffer with 0.09% (w/v) sodium azide and 2% sucrose. <i>Note that this product is shipped as lyophilized powder to China customers.</i>
Purification:	Affinity Purified
Conjugation:	Unconjugated
Storage:	Store at -20°C as received.
Stability:	Stable for 12 months from date of receipt.
Predicted Protein Size:	74 kDa
Gene Name:	Rho guanine nucleotide exchange factor 37
Database Link:	NP_001001669 Entrez Gene 389337 Human A1IGU5
Background:	ARHGEF37 may act as a guanine nucleotide exchange factor (GEF).
Synonyms:	FLJ41603
Note:	Immunogen Sequence Homology: Rat: 100%; Human: 100%; Mouse: 100%; Dog: 93%; Pig: 93%; Horse: 93%; Bovine: 93%; Rabbit: 93%; Guinea pig: 86%



[View online »](#)

Product images:

Host: Rabbit; Target Name: ARHGEF37; Sample
Tissue: THP-1 Whole Cell lysates; Antibody
Dilution: 1.0 ug/ml