

Product datasheet for **TA334894**

BEND4 Rabbit Polyclonal Antibody

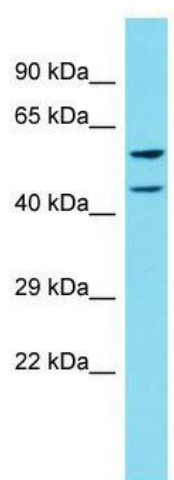
Product data:

Product Type:	Primary Antibodies
Applications:	WB
Recommended Dilution:	WB
Reactivity:	Human
Host:	Rabbit
Isotype:	IgG
Clonality:	Polyclonal
Immunogen:	The immunogen for anti-BEND4 antibody is synthetic peptide directed towards the C-terminal region of Human BEND4. Synthetic peptide located within the following region: GKRKRSVQSGETGPERRPLDPVKVTCLREFIRMHCTSNPDWWMPSEEQIN
Formulation:	Liquid. Purified antibody supplied in 1x PBS buffer with 0.09% (w/v) sodium azide and 2% sucrose.
Purification:	Affinity Purified
Conjugation:	Unconjugated
Storage:	Store at -20°C as received.
Stability:	Stable for 12 months from date of receipt.
Predicted Protein Size:	58 kDa
Gene Name:	BEN domain containing 4
Database Link:	NP_997289 Entrez Gene 389206 Human Q6ZU67
Background:	The function of this protein remains unknown.
Synonyms:	CCDC4
Note:	Immunogen Sequence Homology: Dog: 100%; Pig: 100%; Rat: 100%; Horse: 100%; Human: 100%; Mouse: 100%; Bovine: 100%; Guinea pig: 93%; Zebrafish: 79%



[View online »](#)

Product images:



Host: Rabbit; Target Name: BEND4; Sample
Tissue: 293T Whole Cell lysates; Antibody
Dilution: 1.0 ug/ml