

Product datasheet for **TA334891**

MFSD2B Rabbit Polyclonal Antibody

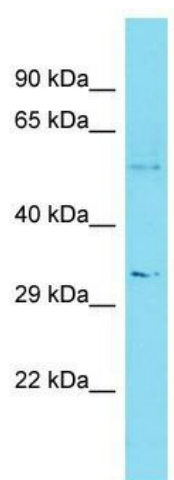
Product data:

Product Type:	Primary Antibodies
Applications:	WB
Recommended Dilution:	WB
Reactivity:	Human
Host:	Rabbit
Isotype:	IgG
Clonality:	Polyclonal
Immunogen:	The immunogen for anti-MFSD2B antibody is: synthetic peptide directed towards the C-terminal region of Human MFSD2B. Synthetic peptide located within the following region: VCKQAEVVTCLKVLIGAVPTCMILAGLCILMVGSTPKTPSRDASSRLSL
Formulation:	Liquid. Purified antibody supplied in 1x PBS buffer with 0.09% (w/v) sodium azide and 2% sucrose.
Purification:	Affinity Purified
Conjugation:	Unconjugated
Storage:	Store at -20°C as received.
Stability:	Stable for 12 months from date of receipt.
Predicted Protein Size:	52 kDa
Gene Name:	major facilitator superfamily domain containing 2B
Database Link:	NP_001073942 Entrez Gene 388931 Human A6NFX1
Background:	The function of this protein remains unknown.
Synonyms:	Gm1964
Note:	Immunogen Sequence Homology: Human: 100%
Protein Families:	Transmembrane



[View online »](#)

Product images:



Host: Rabbit; Target Name: MFSD2B; Sample
Tissue: Fetal Liver lysates; Antibody Dilution: 1.0
ug/ml