

Product datasheet for **TA334890**

C1orf31 (COA6) Rabbit Polyclonal Antibody

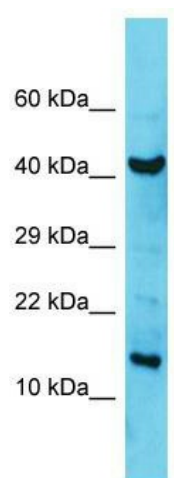
Product data:

Product Type:	Primary Antibodies
Applications:	WB
Recommended Dilution:	WB
Reactivity:	Human
Host:	Rabbit
Isotype:	IgG
Clonality:	Polyclonal
Immunogen:	The immunogen for anti-COA6 antibody is: synthetic peptide directed towards the C-terminal region of Human COA6. Synthetic peptide located within the following region: LDENLEDASQCKLRSSFESSCPQQWIKYFDKRRDYLFKFEKFEAGQFEP
Formulation:	Liquid. Purified antibody supplied in 1x PBS buffer with 0.09% (w/v) sodium azide and 2% sucrose.
Purification:	Affinity Purified
Conjugation:	Unconjugated
Storage:	Store at -20°C as received.
Stability:	Stable for 12 months from date of receipt.
Predicted Protein Size:	13 kDa
Gene Name:	cytochrome c oxidase assembly factor 6
Database Link:	NP_001013003 Entrez Gene 388753 Human Q5JTJ3
Background:	The function of this protein remains unknown.
Synonyms:	C1orf31; CEMCOX4
Note:	Immunogen Sequence Homology: Human: 100%; Pig: 93%; Bovine: 86%; Horse: 79%; Rabbit: 79%



[View online »](#)

Product images:



Host: Rabbit; Target Name: COA6; Sample Tissue: MCF7 Whole Cell lysates; Antibody Dilution: 1.0 ug/ml