

Product datasheet for **TA334889**

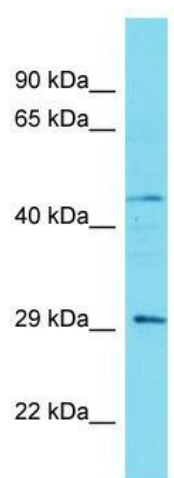
CCDC103 Rabbit Polyclonal Antibody

Product data:

Product Type:	Primary Antibodies
Applications:	WB
Recommended Dilution:	WB
Reactivity:	Human
Host:	Rabbit
Isotype:	IgG
Clonality:	Polyclonal
Immunogen:	The immunogen for anti-CCDC103 antibody is: synthetic peptide directed towards the C-terminal region of Human CCDC103. Synthetic peptide located within the following region: RAAVLGILCSLASTGRFTLNLSLLSRAERESCKGLFQKLQAMGNPRSVKE
Formulation:	Liquid. Purified antibody supplied in 1x PBS buffer with 0.09% (w/v) sodium azide and 2% sucrose. <i>Note that this product is shipped as lyophilized powder to China customers.</i>
Purification:	Affinity Purified
Conjugation:	Unconjugated
Storage:	Store at -20°C as received.
Stability:	Stable for 12 months from date of receipt.
Predicted Protein Size:	27 kDa
Gene Name:	coiled-coil domain containing 103
Database Link:	NP_998772 Entrez Gene 388389 Human Q8IW40
Background:	This gene encodes a protein that contains a coiled-coil domain.
Synonyms:	CILD17; PR46b; SMH
Note:	Immunogen Sequence Homology: Human: 100%; Horse: 93%; Bovine: 86%; Rabbit: 83%; Dog: 79%; Rat: 79%; Mouse: 79%



[View online »](#)

Product images:

Host: Rabbit; Target Name: CCDC103; Sample
Tissue: Fetal Kidney lysates; Antibody Dilution: 1.0
ug/ml