

Product datasheet for **TA334888**

C16orf87 Rabbit Polyclonal Antibody

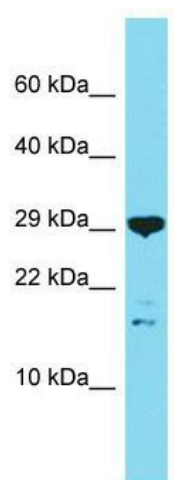
Product data:

Product Type:	Primary Antibodies
Applications:	WB
Recommended Dilution:	WB
Reactivity:	Human
Host:	Rabbit
Isotype:	IgG
Clonality:	Polyclonal
Immunogen:	The immunogen for anti-C16orf87 antibody is: synthetic peptide directed towards the N-terminal region of Human C16orf87. Synthetic peptide located within the following region: SCPECDQQVPVACKSCPCGYIFISRKLLNAKHSEKSPSTENKHEAKRRR
Formulation:	Liquid. Purified antibody supplied in 1x PBS buffer with 0.09% (w/v) sodium azide and 2% sucrose.
Purification:	Affinity Purified
Conjugation:	Unconjugated
Storage:	Store at -20°C as received.
Stability:	Stable for 12 months from date of receipt.
Predicted Protein Size:	16 kDa
Gene Name:	chromosome 16 open reading frame 87
Database Link:	NP_001001436 Entrez Gene 388272 Human Q6PH81
Background:	The function of this protein remains unknown.
Synonyms:	MGC62018
Note:	Immunogen Sequence Homology: Rat: 100%; Human: 100%; Mouse: 100%; Rabbit: 100%; Dog: 93%; Pig: 93%; Horse: 93%; Guinea pig: 93%; Bovine: 79%



[View online »](#)

Product images:



Host: Rabbit; Target Name: C16orf87; Sample
Tissue: OVCAR-3 Whole Cell lysates; Antibody
Dilution: 1.0 ug/ml