

Product datasheet for **TA334887**

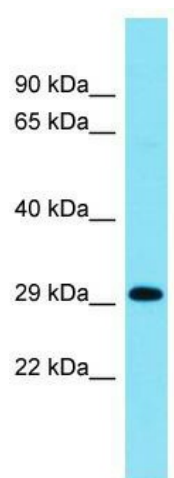
INSYN1 Rabbit Polyclonal Antibody

Product data:

Product Type:	Primary Antibodies
Applications:	WB
Recommended Dilution:	WB
Reactivity:	Human
Host:	Rabbit
Isotype:	IgG
Clonality:	Polyclonal
Immunogen:	The immunogen for anti-C15orf59 antibody is: synthetic peptide directed towards the C-terminal region of Human C15orf59. Synthetic peptide located within the following region: PLTSRHSGSTLAPEQTRRVTRNSSTQTVSDKSTQTVLPYTATRQKARGKN
Formulation:	Liquid. Purified antibody supplied in 1x PBS buffer with 0.09% (w/v) sodium azide and 2% sucrose. <i>Note that this product is shipped as lyophilized powder to China customers.</i>
Purification:	Affinity Purified
Conjugation:	Unconjugated
Storage:	Store at -20°C as received.
Stability:	Stable for 12 months from date of receipt.
Predicted Protein Size:	31 kDa
Gene Name:	chromosome 15 open reading frame 59
Database Link:	NP_001034703 Entrez Gene 388135 Human Q2T9L4
Background:	The function of this protein remains unknown.
Synonyms:	MGC131524
Note:	Immunogen Sequence Homology: Rat: 100%; Human: 100%; Pig: 93%; Horse: 93%; Bovine: 93%; Mouse: 86%; Dog: 79%; Guinea pig: 79%



[View online »](#)

Product images:

Host: Rabbit; Target Name: C15orf59; Sample
Tissue: RPMI-8226 Whole Cell lysates; Antibody
Dilution: 1.0 ug/ml