

Product datasheet for **TA334886**

OCC1 (C12orf75) Rabbit Polyclonal Antibody

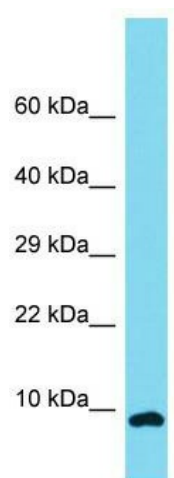
Product data:

Product Type:	Primary Antibodies
Applications:	WB
Recommended Dilution:	WB
Reactivity:	Human
Host:	Rabbit
Isotype:	IgG
Clonality:	Polyclonal
Immunogen:	The immunogen for anti-C12orf75 antibody is: synthetic peptide directed towards the N-terminal region of Human C12orf75. Synthetic peptide located within the following region: QGPAGAAKDVTEESVTEDDKRRNYGGVYVGLPSEAVNMVSSQTKTVRKN
Formulation:	Liquid. Purified antibody supplied in 1x PBS buffer with 0.09% (w/v) sodium azide and 2% sucrose. <i>Note that this product is shipped as lyophilized powder to China customers.</i>
Purification:	Affinity Purified
Conjugation:	Unconjugated
Storage:	Store at -20°C as received.
Stability:	Stable for 12 months from date of receipt.
Predicted Protein Size:	6 kDa
Gene Name:	chromosome 12 open reading frame 75
Database Link:	NP_001138671 Entrez Gene 387882 Human Q8TAD7
Background:	The function of this protein remains unknown.
Synonyms:	AGD3; OCC-1; OCC1
Note:	Immunogen Sequence Homology: Human: 100%; Bovine: 93%; Pig: 86%; Rat: 86%; Mouse: 86%



[View online »](#)

Product images:



Host: Rabbit; Target Name: C12orf75; Sample
Tissue: NCI-H226 Whole Cell lysates; Antibody
Dilution: 1.0 ug/ml