

Product datasheet for **TA334885**

VSTM5 Rabbit Polyclonal Antibody

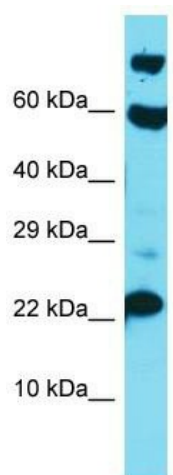
Product data:

Product Type:	Primary Antibodies
Applications:	WB
Recommended Dilution:	WB
Reactivity:	Human
Host:	Rabbit
Isotype:	IgG
Clonality:	Polyclonal
Immunogen:	The immunogen for anti-VSTM5 antibody is: synthetic peptide directed towards the C-terminal region of Human VSTM5. Synthetic peptide located within the following region: HFVAVILAFLAAVA AVLISLMWVCNK CAYKFQRKRRLKLESTTEEIELE
Formulation:	Liquid. Purified antibody supplied in 1x PBS buffer with 0.09% (w/v) sodium azide and 2% sucrose. <i>Note that this product is shipped as lyophilized powder to China customers.</i>
Purification:	Affinity Purified
Conjugation:	Unconjugated
Storage:	Store at -20°C as received.
Stability:	Stable for 12 months from date of receipt.
Predicted Protein Size:	22 kDa
Gene Name:	V-set and transmembrane domain containing 5
Database Link:	NP_001138343 Entrez Gene 387804 Human A8MXK1
Background:	The function of this protein remains unknown.
Synonyms:	C11orf90
Note:	Immunogen Sequence Homology: Pig: 100%; Rat: 100%; Horse: 100%; Human: 100%; Bovine: 100%; Rabbit: 100%; Guinea pig: 100%; Mouse: 93%
Protein Families:	Transmembrane



[View online »](#)

Product images:



Host: Rabbit
Target Name: VSTM5
Sample Tissue: A549 Cell Lysate
Antibody Dilution: 1.0 µg/ml

Host: Rabbit; Target Name: VSTM5; Sample
Tissue: A549 Whole Cell lysates; Antibody
Dilution: 1.0 ug/ml