

Product datasheet for **TA334884**

TEX36 Rabbit Polyclonal Antibody

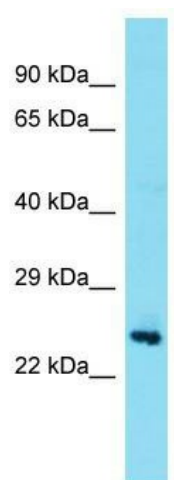
Product data:

| | |
|-------------------------|--|
| Product Type: | Primary Antibodies |
| Applications: | WB |
| Recommended Dilution: | WB |
| Reactivity: | Human |
| Host: | Rabbit |
| Isotype: | IgG |
| Clonality: | Polyclonal |
| Immunogen: | The immunogen for anti-TEX36 antibody is synthetic peptide directed towards the middle region of Human TEX36. Synthetic peptide located within the following region: GRKKISPDKRQHVS RNFN LWACDYVPSCLDGFSNNQISYVYKEAMVVSSF |
| Formulation: | Liquid. Purified antibody supplied in 1x PBS buffer with 0.09% (w/v) sodium azide and 2% sucrose. |
| Purification: | Affinity Purified |
| Conjugation: | Unconjugated |
| Storage: | Store at -20°C as received. |
| Stability: | Stable for 12 months from date of receipt. |
| Predicted Protein Size: | 21 kDa |
| Gene Name: | testis expressed 36 |
| Database Link: | NP_001121674 Entrez Gene 387718 Human Q5VZQ5 |
| Background: | The function of this protein remains unknown. |
| Synonyms: | bA383C5.1; C10orf122 |
| Note: | Immunogen Sequence Homology: Human: 100%; Rabbit: 100%; Rat: 93%; Bovine: 93%; Dog: 86%; Pig: 86%; Horse: 86%; Guinea pig: 86% |



[View online »](#)

Product images:



Host: Rabbit; Target Name: TEX36; Sample
Tissue: Fetal Brain lysates; Antibody Dilution: 1.0
ug/ml