

## Product datasheet for **TA334881**

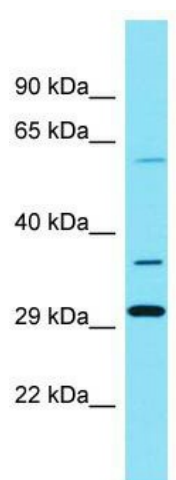
### SLC22A25 Rabbit Polyclonal Antibody

#### Product data:

Product Type:	Primary Antibodies
Applications:	WB
Recommended Dilution:	WB
Reactivity:	Human
Host:	Rabbit
Isotype:	IgG
Clonality:	Polyclonal
Immunogen:	The immunogen for anti-SLC22A25 antibody is: synthetic peptide directed towards the middle region of Human SLC22A25. Synthetic peptide located within the following region: VFFLFSRWLAESARWLIINNKPPEGLKELRKAHRNGMKNAEDILTMEVL
Formulation:	Liquid. Purified antibody supplied in 1x PBS buffer with 0.09% (w/v) sodium azide and 2% sucrose.
Purification:	Affinity Purified
Conjugation:	Unconjugated
Storage:	Store at -20°C as received.
Stability:	Stable for 12 months from date of receipt.
Predicted Protein Size:	61 kDa
Gene Name:	solute carrier family 22 member 25
Database Link:	<a href="#">NP_955384</a> <a href="#">Entrez Gene 387601 Human</a> <a href="#">Q6T423</a>
Background:	The function of this protein remains unknown.
Synonyms:	HIMTP; UST6
Note:	Immunogen Sequence Homology: Pig: 100%; Human: 100%; Rabbit: 93%; Dog: 92%; Horse: 92%; Bovine: 85%; Rat: 83%; Mouse: 83%
Protein Families:	Transmembrane



[View online »](#)

**Product images:**

Host: Rabbit; Target Name: SLC22A25; Sample  
Tissue: PANC1 Whole Cell lysates; Antibody  
Dilution: 1.0 ug/ml