

Product datasheet for TA334880

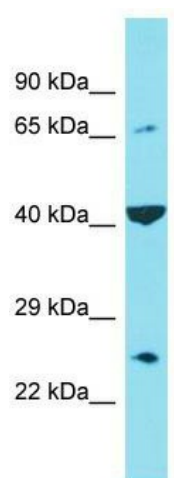
C6orf120 Rabbit Polyclonal Antibody

Product data:

Product Type:	Primary Antibodies
Applications:	WB
Recommended Dilution:	WB
Reactivity:	Human
Host:	Rabbit
Isotype:	IgG
Clonality:	Polyclonal
Immunogen:	The immunogen for anti-C6orf120 antibody is: synthetic peptide directed towards the C-terminal region of Human C6orf120. Synthetic peptide located within the following region: KYYDGTVEQHPFGEEAAYPADGADAGQKHAGAPEDASQEEESVLWTILIS
Formulation:	Liquid. Purified antibody supplied in 1x PBS buffer with 0.09% (w/v) sodium azide and 2% sucrose.
Purification:	Affinity Purified
Conjugation:	Unconjugated
Storage:	Store at -20°C as received.
Stability:	Stable for 12 months from date of receipt.
Predicted Protein Size:	21 kDa
Gene Name:	chromosome 6 open reading frame 120
Database Link:	NP_001025034 Entrez Gene 387263 Human Q7Z4R8
Background:	C6orf120 may be involved in induction of apoptosis in CD4+ T-cells, but not CD8+ T-cells or hepatocytes.
Synonyms:	bA160E12.4
Note:	Immunogen Sequence Homology: Human: 100%; Bovine: 92%; Rat: 86%


[View online »](#)

Product images:



Host: Rabbit; Target Name: C6orf120; Sample
Tissue: HeLa Whole cell lysates; Antibody Dilution:
1.0 ug/ml