

Product datasheet for **TA334879**

AQP12 (AQP12A) Rabbit Polyclonal Antibody

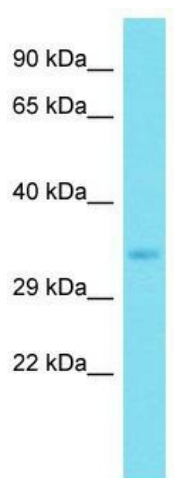
Product data:

Product Type:	Primary Antibodies
Applications:	WB
Recommended Dilution:	WB
Reactivity:	Human
Host:	Rabbit
Isotype:	IgG
Clonality:	Polyclonal
Immunogen:	The immunogen for anti-AQP12A antibody is: synthetic peptide directed towards the C-terminal region of Human AQP12A. Synthetic peptide located within the following region: RLPHLFQRNLFYQGKNKYRAPRGKPAPASGDTQTPAKGSSVREPGRSGVE
Formulation:	Liquid. Purified antibody supplied in 1x PBS buffer with 0.09% (w/v) sodium azide and 2% sucrose.
Purification:	Affinity Purified
Conjugation:	Unconjugated
Storage:	Store at -20°C as received.
Stability:	Stable for 12 months from date of receipt.
Predicted Protein Size:	32 kDa
Gene Name:	aquaporin 12A
Database Link:	NP_945349 Entrez Gene 375318 Human Q8IXF9
Background:	Aquaporins facilitate the transport of water and small neutral solutes across cell membranes.
Synonyms:	AQP-12; AQP12; AQPX2
Note:	Immunogen Sequence Homology: Human: 100%; Horse: 79%; Mouse: 79%; Rat: 77%; Bovine: 75%



[View online »](#)

Product images:



Host: Rabbit; Target Name: AQP12A; Sample
Tissue: ACHN Whole cell lysates; Antibody
Dilution: 1.0 ug/ml