

Product datasheet for **TA334878**

ANKRD36 Rabbit Polyclonal Antibody

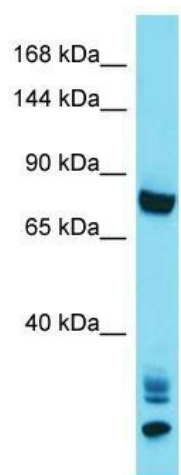
Product data:

Product Type:	Primary Antibodies
Applications:	WB
Recommended Dilution:	WB
Reactivity:	Human
Host:	Rabbit
Isotype:	IgG
Clonality:	Polyclonal
Immunogen:	The immunogen for anti-ANKRD36 antibody is: synthetic peptide directed towards the C-terminal region of Human ANKRD36. Synthetic peptide located within the following region: MQSYHCRLNAARCDHDQSHSSKRDQELAFQGTVDKCRHLQENLNHVLIL
Formulation:	Liquid. Purified antibody supplied in 1x PBS buffer with 0.09% (w/v) sodium azide and 2% sucrose. <i>Note that this product is shipped as lyophilized powder to China customers.</i>
Purification:	Affinity Purified
Conjugation:	Unconjugated
Storage:	Store at -20°C as received.
Stability:	Stable for 12 months from date of receipt.
Predicted Protein Size:	78 kDa
Gene Name:	ankyrin repeat domain 36
Database Link:	NP_001157787 Entrez Gene 375248 Human A6QL64
Background:	The function of this protein remains unknown.
Synonyms:	UNQ2430
Note:	Immunogen Sequence Homology: Human: 100%; Dog: 77%; Horse: 77%; Bovine: 77%



[View online »](#)

Product images:



Host: Rabbit; Target Name: ANKRD36; Sample
Tissue: HepG2 Whole Cell lysates; Antibody
Dilution: 1.0 ug/ml