

Product datasheet for **TA334877**

C1orf223 (TEX38) Rabbit Polyclonal Antibody

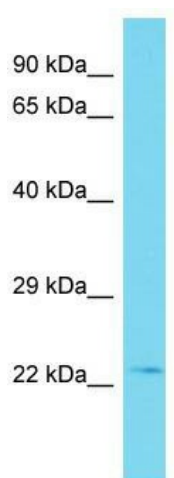
Product data:

Product Type:	Primary Antibodies
Applications:	WB
Recommended Dilution:	WB
Reactivity:	Human
Host:	Rabbit
Isotype:	IgG
Clonality:	Polyclonal
Immunogen:	The immunogen for anti-TEX38 antibody is: synthetic peptide directed towards the middle region of Human TEX38. Synthetic peptide located within the following region: PDVLWLDLPIEGRSHADQDSNPKAEAPAPLQPALQLAPQQPQARSPPFLP
Formulation:	Liquid. Purified antibody supplied in 1x PBS buffer with 0.09% (w/v) sodium azide and 2% sucrose.
Purification:	Affinity Purified
Conjugation:	Unconjugated
Storage:	Store at -20°C as received.
Stability:	Stable for 12 months from date of receipt.
Predicted Protein Size:	23 kDa
Gene Name:	testis expressed 38
Database Link:	NP_001138946 Entrez Gene 374973 Human Q6PEX7
Background:	The function of this protein remains unknown.
Synonyms:	ATPAF1-AS1; C1orf223; THEG4
Note:	Immunogen Sequence Homology: Human: 100%
Protein Families:	Transmembrane



[View online »](#)

Product images:



Host: Rabbit; Target Name: TEX38; Sample
Tissue: HeLa Whole cell lysates; Antibody Dilution:
1.0 ug/ml