

Product datasheet for **TA334876**

C1orf187 (DRAXIN) Rabbit Polyclonal Antibody

Product data:

Product Type:	Primary Antibodies
Applications:	WB
Recommended Dilution:	WB
Reactivity:	Human
Host:	Rabbit
Isotype:	IgG
Clonality:	Polyclonal
Immunogen:	The immunogen for anti-DRAXIN antibody is: synthetic peptide directed towards the C-terminal region of Human DRAXIN. Synthetic peptide located within the following region: TLDMALFDWTDYEDLKPDGWPSAKKKEKHRGKLSSDGNETSPAEGEPCDH
Formulation:	Liquid. Purified antibody supplied in 1x PBS buffer with 0.09% (w/v) sodium azide and 2% sucrose.
Purification:	Affinity Purified
Conjugation:	Unconjugated
Storage:	Store at -20°C as received.
Stability:	Stable for 12 months from date of receipt.
Predicted Protein Size:	36 kDa
Gene Name:	dorsal inhibitory axon guidance protein
Database Link:	NP_940947 Entrez Gene 374946 Human Q8NBI3
Background:	DRAXIN is a chemorepulsive axon guidance protein required for the development of spinal cord and forebrain commissures. It acts as a chemorepulsive guidance protein for commissural axons during development and is able to inhibit or repel neurite outgrowth from dorsal spinal cord. DRAXIN inhibits the stabilization of cytosolic beta-catenin (CTNNB1) via its interaction with LRP6, thereby acting as an antagonist of Wnt signaling pathway.
Synonyms:	AGPA3119; C1orf187; neucrin; UNQ3119

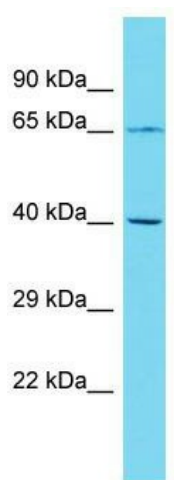


[View online »](#)

Note: Immunogen Sequence Homology: Horse: 100%; Human: 100%; Dog: 93%; Pig: 86%; Bovine: 86%

Protein Families: Secreted Protein, Transmembrane

Product images:



Host: Rabbit; Target Name: DRAXIN; Sample Tissue: 721_B Whole Cell lysates; Antibody Dilution: 1.0 ug/ml