

## Product datasheet for TA334875

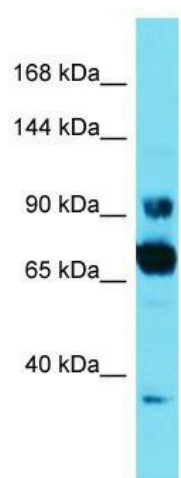
### C18orf34 (CCDC178) Rabbit Polyclonal Antibody

#### Product data:

Product Type:	Primary Antibodies
Applications:	WB
Recommended Dilution:	WB
Reactivity:	Human
Host:	Rabbit
Isotype:	IgG
Clonality:	Polyclonal
Immunogen:	The immunogen for anti-CCDC178 antibody is: synthetic peptide directed towards the C-terminal region of Human CCDC178. Synthetic peptide located within the following region: VVLF SQMRLANFQTDSQESI QKILAVQEESNL MQHILGFFQTLTDGTCE
Formulation:	Liquid. Purified antibody supplied in 1x PBS buffer with 0.09% (w/v) sodium azide and 2% sucrose.
Purification:	Affinity Purified
Conjugation:	Unconjugated
Storage:	Store at -20°C as received.
Stability:	Stable for 12 months from date of receipt.
Predicted Protein Size:	97 kDa
Gene Name:	coiled-coil domain containing 178
Database Link:	<a href="#">NP_945346</a> <a href="#">Entrez Gene 374864 Human</a> <a href="#">Q5BJE1</a>
Background:	The function of this protein remains unknown.
Synonyms:	C18orf34
Note:	Immunogen Sequence Homology: Human: 100%; Rabbit: 100%; Dog: 93%; Mouse: 79%


[View online »](#)

## Product images:



Host: Rabbit; Target Name: CCDC178; Sample  
Tissue: HT1080 Whole Cell lysates; Antibody  
Dilution: 1.0 ug/ml