

Product datasheet for **TA334874**

LPLUNC3 (BPIFB3) Rabbit Polyclonal Antibody

Product data:

Product Type:	Primary Antibodies
Applications:	WB
Recommended Dilution:	WB
Reactivity:	Human
Host:	Rabbit
Isotype:	IgG
Clonality:	Polyclonal
Immunogen:	The immunogen for anti-BPIFB3 antibody is: synthetic peptide directed towards the C-terminal region of Human BPIFB3. Synthetic peptide located within the following region: IELDINPIVKSVAGDIIDFPKSRAPAKVPPKKDHTSQVMVPLYLFNTTFG
Formulation:	Liquid. Purified antibody supplied in 1x PBS buffer with 0.09% (w/v) sodium azide and 2% sucrose. <i>Note that this product is shipped as lyophilized powder to China customers.</i>
Purification:	Affinity Purified
Conjugation:	Unconjugated
Storage:	Store at -20°C as received.
Stability:	Stable for 12 months from date of receipt.
Predicted Protein Size:	48 kDa
Gene Name:	BPI fold containing family B member 3
Database Link:	NP_872599 Entrez Gene 359710 Human P59826
Background:	BPIFB3 may have the capacity to recognize and bind specific classes of odorants. It may act as a carrier molecule, transporting odorants across the mucus layer to access receptor sites and serve as a primary defense mechanism by recognizing and removing potentially harmful odorants or pathogenic microorganisms from the mucosa or clearing excess odorant from mucus to enable new odorant stimuli to be received.
Synonyms:	C20orf185; LPLUNC3; RYA3

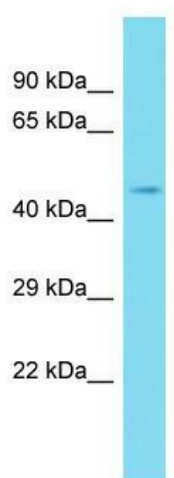


[View online »](#)

Note: Immunogen Sequence Homology: Human: 100%; Dog: 86%; Pig: 86%; Rat: 86%; Horse: 86%; Mouse: 86%; Bovine: 86%; Guinea pig: 86%

Protein Families: Druggable Genome, Secreted Protein

Product images:



Host: Rabbit; Target Name: BPIFB3; Sample Tissue: Fetal Liver lysates; Antibody Dilution: 1.0 ug/ml