

Product datasheet for **TA334871**

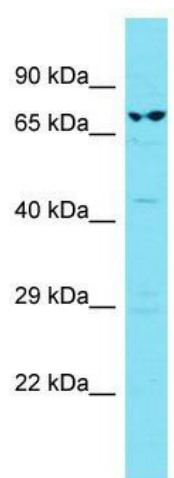
CCDC37 (CFAP100) Rabbit Polyclonal Antibody

Product data:

Product Type:	Primary Antibodies
Applications:	WB
Recommended Dilution:	WB
Reactivity:	Human
Host:	Rabbit
Isotype:	IgG
Clonality:	Polyclonal
Immunogen:	The immunogen for anti-CCDC37 antibody is: synthetic peptide directed towards the C-terminal region of Human CCDC37. Synthetic peptide located within the following region: KIEQAERAKEKERRIRLREEKLQMQKILQEEHLQRARARAQAEIKKKRGR
Formulation:	Liquid. Purified antibody supplied in 1x PBS buffer with 0.09% (w/v) sodium azide and 2% sucrose. <i>Note that this product is shipped as lyophilized powder to China customers.</i>
Purification:	Affinity Purified
Conjugation:	Unconjugated
Storage:	Store at -20°C as received.
Stability:	Stable for 12 months from date of receipt.
Predicted Protein Size:	70 kDa
Gene Name:	cilia and flagella associated protein 100
Database Link:	NP_872434 Entrez Gene 348807 Human Q494V2
Background:	The function of this protein remains unknown.
Synonyms:	CCDC37; MIA1
Note:	Immunogen Sequence Homology: Human: 100%; Dog: 93%; Pig: 93%; Rat: 93%; Horse: 93%; Guinea pig: 93%; Bovine: 92%; Mouse: 86%; Rabbit: 79%



[View online »](#)

Product images:

Host: Rabbit; Target Name: CCDC37; Sample
Tissue: ACHN Whole cell lysates; Antibody
Dilution: 1.0 ug/ml