

Product datasheet for **TA334869**

ACTBL2 Rabbit Polyclonal Antibody

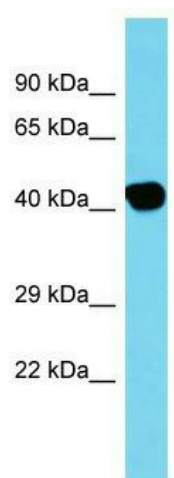
Product data:

Product Type:	Primary Antibodies
Applications:	WB
Recommended Dilution:	WB
Reactivity:	Human
Host:	Rabbit
Isotype:	IgG
Clonality:	Polyclonal
Immunogen:	The immunogen for anti-ACTBL2 antibody is: synthetic peptide directed towards the C-terminal region of Human ACTBL2. Synthetic peptide located within the following region: TMKIKIAPPKYSVWIGGSILASLSTFQQMWISKQEYDEAGPPIVHRK
Formulation:	Liquid. Purified antibody supplied in 1x PBS buffer with 0.09% (w/v) sodium azide and 2% sucrose. <i>Note that this product is shipped as lyophilized powder to China customers.</i>
Purification:	Affinity Purified
Conjugation:	Unconjugated
Storage:	Store at -20°C as received.
Stability:	Stable for 12 months from date of receipt.
Predicted Protein Size:	42 kDa
Gene Name:	actin, beta-like 2
Database Link:	NP_001017992 Entrez Gene 345651 Human Q562R1
Background:	Actins are highly conserved proteins that are involved in various types of cell motility and are ubiquitously expressed in all eukaryotic cells.
Synonyms:	ACT
Note:	Immunogen Sequence Homology: Rat: 100%; Horse: 100%; Human: 100%; Mouse: 100%; Rabbit: 100%; Dog: 93%; Pig: 93%; Yeast: 93%; Bovine: 93%; Zebrafish: 93%; Guinea pig: 93%



[View online »](#)

Product images:



Host: Rabbit; Target Name: ACTBL2; Sample
Tissue: Placenta lysates; Antibody Dilution: 1.0
ug/ml