

## Product datasheet for **TA334868**

### **C4orf44 (MSANTD1) Rabbit Polyclonal Antibody**

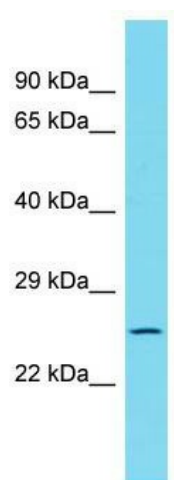
#### **Product data:**

<b>Product Type:</b>	Primary Antibodies
<b>Applications:</b>	WB
<b>Recommended Dilution:</b>	WB
<b>Reactivity:</b>	Human
<b>Host:</b>	Rabbit
<b>Isotype:</b>	IgG
<b>Clonality:</b>	Polyclonal
<b>Immunogen:</b>	The immunogen for anti-MSANTD1 antibody is: synthetic peptide directed towards the C-terminal region of Human MSANTD1. Synthetic peptide located within the following region: SLSPPAKSTPLYFPYNQCSYEGRFEDDRSDSSSSLLSLKFRSEERPVKKR
<b>Formulation:</b>	Liquid. Purified antibody supplied in 1x PBS buffer with 0.09% (w/v) sodium azide and 2% sucrose. <i>Note that this product is shipped as lyophilized powder to China customers.</i>
<b>Purification:</b>	Affinity Purified
<b>Conjugation:</b>	Unconjugated
<b>Storage:</b>	Store at -20°C as received.
<b>Stability:</b>	Stable for 12 months from date of receipt.
<b>Predicted Protein Size:</b>	31 kDa
<b>Gene Name:</b>	Myb/SANT DNA binding domain containing 1
<b>Database Link:</b>	<a href="#">NP_001036155</a> <a href="#">Entrez Gene 345222 Human</a> <a href="#">Q6ZTZ1</a>
<b>Background:</b>	The function of this protein remains unknown.
<b>Synonyms:</b>	C4orf44
<b>Note:</b>	Immunogen Sequence Homology: Pig: 100%; Rat: 100%; Human: 100%; Guinea pig: 100%; Dog: 93%; Horse: 93%; Mouse: 93%; Rabbit: 93%; Bovine: 85%



[View online »](#)

## Product images:



Host: Rabbit; Target Name: MSANTD1; Sample  
Tissue: 721\_B Whole Cell lysates; Antibody  
Dilution: 1.0 ug/ml