

## Product datasheet for TA334866

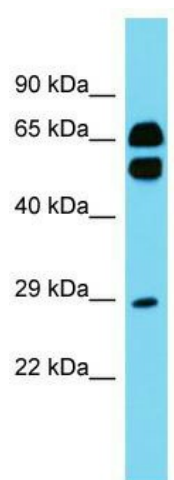
### CD200R1L Rabbit Polyclonal Antibody

#### Product data:

Product Type:	Primary Antibodies
Applications:	WB
Recommended Dilution:	WB
Reactivity:	Human
Host:	Rabbit
Isotype:	IgG
Clonality:	Polyclonal
Immunogen:	The immunogen for anti-CD200R1L antibody is: synthetic peptide directed towards the N-terminal region of Human CD200R1L. Synthetic peptide located within the following region: ETKETNCTVERITWVSRPDQNSDLQIRPVDTHDGYRGIVVTPDGNFHR
Formulation:	Liquid. Purified antibody supplied in 1x PBS buffer with 0.09% (w/v) sodium azide and 2% sucrose.
Purification:	Affinity Purified
Conjugation:	Unconjugated
Storage:	Store at -20°C as received.
Stability:	Stable for 12 months from date of receipt.
Predicted Protein Size:	27 kDa
Gene Name:	CD200 receptor 1 like
Database Link:	<a href="#">NP_001008784</a> <a href="#">Entrez Gene 344807 Human</a> <a href="#">Q6Q8B3</a>
Background:	CD200R1L may be a receptor for the CD200/OX2 cell surface glycoprotein.
Synonyms:	CD200R2; CD200RLa
Note:	Immunogen Sequence Homology: Human: 100%; Rat: 83%
Protein Families:	Druggable Genome, Transmembrane


[View online »](#)

## Product images:



Host: Rabbit; Target Name: CD200R1L; Sample  
Tissue: Fetal Heart lysates; Antibody Dilution: 1.0  
ug/ml