

Product datasheet for **TA334862**

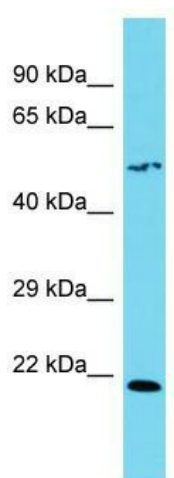
SLC35F4 Rabbit Polyclonal Antibody

Product data:

Product Type:	Primary Antibodies
Applications:	WB
Recommended Dilution:	WB
Reactivity:	Human
Host:	Rabbit
Isotype:	IgG
Clonality:	Polyclonal
Immunogen:	The immunogen for anti-SLC35F4 antibody is: synthetic peptide directed towards the C-terminal region of Human SLC35F4. Synthetic peptide located within the following region: LLMLLPEEWDEITLRFINSLKEKKSEEHVDDVTDPsiHLRGRGRANGTVS
Formulation:	Liquid. Purified antibody supplied in 1x PBS buffer with 0.09% (w/v) sodium azide and 2% sucrose. <i>Note that this product is shipped as lyophilized powder to China customers.</i>
Purification:	Affinity Purified
Conjugation:	Unconjugated
Storage:	Store at -20°C as received.
Stability:	Stable for 12 months from date of receipt.
Predicted Protein Size:	53 kDa
Gene Name:	solute carrier family 35 member F4
Database Link:	NP_001193849 Entrez Gene 341880 Human A4IF30
Background:	The function of this protein remains unknown.
Synonyms:	C14orf36; c14_5373
Note:	Immunogen Sequence Homology: Human: 100%; Pig: 93%; Bovine: 93%; Rabbit: 93%; Dog: 86%; Rat: 86%; Horse: 86%; Mouse: 86%; Guinea pig: 79%
Protein Families:	Transmembrane



[View online »](#)

Product images:

Host: Rabbit; Target Name: SLC35F4; Sample
Tissue: 293T Whole Cell lysates; Antibody
Dilution: 1.0 ug/ml