

## Product datasheet for TA334861

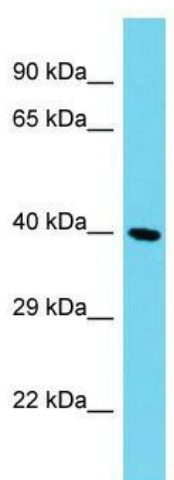
### C12orf70 (SMCO2) Rabbit Polyclonal Antibody

#### Product data:

Product Type:	Primary Antibodies
Applications:	WB
Recommended Dilution:	WB
Reactivity:	Human
Host:	Rabbit
Isotype:	IgG
Clonality:	Polyclonal
Immunogen:	The immunogen for anti-C12orf70 antibody is: synthetic peptide directed towards the N-terminal region of Human C12orf70. Synthetic peptide located within the following region: DRSDDEDDISSENPQTDFLHKGMLELEAEHDQDLSKQDKQETDVEDDPQA
Formulation:	Liquid. Purified antibody supplied in 1x PBS buffer with 0.09% (w/v) sodium azide and 2% sucrose.
Purification:	Affinity Purified
Conjugation:	Unconjugated
Storage:	Store at -20°C as received.
Stability:	Stable for 12 months from date of receipt.
Predicted Protein Size:	39 kDa
Gene Name:	single-pass membrane protein with coiled-coil domains 2
Database Link:	<a href="#">NP_001138482</a> <a href="#">Entrez Gene 341346 Human</a> <a href="#">A6NFE2</a>
Background:	The function of this protein remains unknown.
Synonyms:	C12orf70
Note:	Immunogen Sequence Homology: Human: 100%


[View online »](#)

## Product images:



Host: Rabbit; Target Name: C12orf70; Sample  
Tissue: HepG2 Whole Cell lysates; Antibody  
Dilution: 1.0 ug/ml