

Product datasheet for **TA334860**

FAM166C Rabbit Polyclonal Antibody

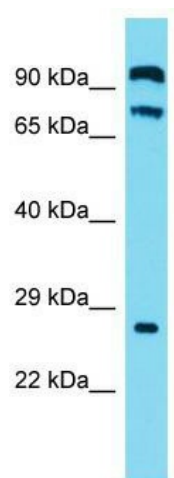
Product data:

Product Type:	Primary Antibodies
Applications:	WB
Recommended Dilution:	WB
Reactivity:	Human
Host:	Rabbit
Isotype:	IgG
Clonality:	Polyclonal
Immunogen:	The immunogen for anti-C2orf70 antibody is: synthetic peptide directed towards the C-terminal region of Human C2orf70. Synthetic peptide located within the following region: TVLPPLCPKKKWHLLRLAPENLKTYQTFPSGKRVSPQERKKRDCYFEFRA
Formulation:	Liquid. Purified antibody supplied in 1x PBS buffer with 0.09% (w/v) sodium azide and 2% sucrose.
Purification:	Affinity Purified
Conjugation:	Unconjugated
Storage:	Store at -20°C as received.
Stability:	Stable for 12 months from date of receipt.
Predicted Protein Size:	23 kDa
Gene Name:	chromosome 2 open reading frame 70
Database Link:	NP_001098989 Entrez Gene 339778 Human A6NJV1
Background:	The function of this protein remains unknown.
Synonyms:	C2orf70
Note:	Immunogen Sequence Homology: Human: 100%; Horse: 93%; Dog: 86%; Bovine: 86%; Rabbit: 86%



[View online »](#)

Product images:



Host: Rabbit; Target Name: C2orf70; Sample
Tissue: OVCAR-3 Whole Cell lysates; Antibody
Dilution: 1.0 ug/ml