

Product datasheet for **TA334858**

ARMH1 Rabbit Polyclonal Antibody

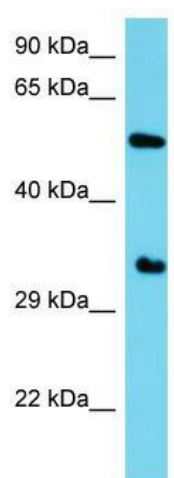
Product data:

Product Type:	Primary Antibodies
Applications:	WB
Recommended Dilution:	WB
Reactivity:	Human
Host:	Rabbit
Isotype:	IgG
Clonality:	Polyclonal
Immunogen:	The immunogen for anti-C1orf228 antibody is: synthetic peptide directed towards the N-terminal region of Human C1orf228. Synthetic peptide located within the following region: LSAVSSNRYLIEFLEVGGVLTLLLEILGLEKIKEEAKKESVKLLQVIANS
Formulation:	Liquid. Purified antibody supplied in 1x PBS buffer with 0.09% (w/v) sodium azide and 2% sucrose. <i>Note that this product is shipped as lyophilized powder to China customers.</i>
Purification:	Affinity Purified
Conjugation:	Unconjugated
Storage:	Store at -20°C as received.
Stability:	Stable for 12 months from date of receipt.
Predicted Protein Size:	48 kDa
Gene Name:	chromosome 1 open reading frame 228
Database Link:	NP_001139108 Entrez Gene 339541 Human Q6PIY5
Background:	The function of this protein remains unknown.
Synonyms:	NCRNA00082; p40
Note:	Immunogen Sequence Homology: Human: 100%; Rat: 86%; Horse: 86%; Pig: 79%; Bovine: 79%; Rabbit: 79%; Guinea pig: 79%; Dog: 77%; Mouse: 77%



[View online »](#)

Product images:



Host: Rabbit; Target Name: C1orf228; Sample
Tissue: HepG2 Whole Cell lysates; Antibody
Dilution: 1.0 ug/ml