

Product datasheet for **TA334857**

KIAA1751 (CFAP74) Rabbit Polyclonal Antibody

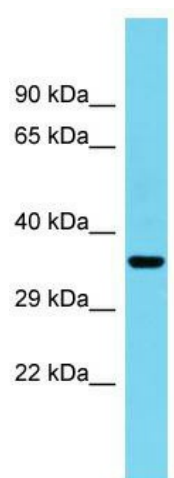
Product data:

Product Type:	Primary Antibodies
Applications:	WB
Recommended Dilution:	WB
Reactivity:	Human
Host:	Rabbit
Isotype:	IgG
Clonality:	Polyclonal
Immunogen:	The immunogen for anti-C1orf222 antibody is: synthetic peptide directed towards the C-terminal region of Human C1orf222. Synthetic peptide located within the following region: EELRPILVTLDYIQFDTPAPPATRELQVGCIRTTQPSPKKTVEFSIDS
Formulation:	Liquid. Purified antibody supplied in 1x PBS buffer with 0.09% (w/v) sodium azide and 2% sucrose. <i>Note that this product is shipped as lyophilized powder to China customers.</i>
Purification:	Affinity Purified
Conjugation:	Unconjugated
Storage:	Store at -20°C as received.
Stability:	Stable for 12 months from date of receipt.
Predicted Protein Size:	33 kDa
Gene Name:	cilia and flagella associated protein 74
Database Link:	NP_001003808 Entrez Gene 339457 Entrez Gene 85452 Human Q9C0B2
Background:	The function of this protein remains unknown.
Synonyms:	MGC133181
Note:	Immunogen Sequence Homology: Pig: 100%; Human: 100%; Guinea pig: 100%; Rat: 90%; Dog: 86%; Bovine: 86%



[View online »](#)

Product images:



Host: Rabbit; Target Name: C1orf222; Sample
Tissue: Fetal Heart lysates; Antibody Dilution: 1.0
ug/ml