

## Product datasheet for **TA334856**

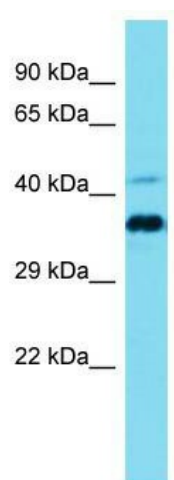
### CC137 (CCDC137) Rabbit Polyclonal Antibody

#### Product data:

Product Type:	Primary Antibodies
Applications:	WB
Recommended Dilution:	WB
Reactivity:	Human
Host:	Rabbit
Isotype:	IgG
Clonality:	Polyclonal
Immunogen:	The immunogen for anti-CCDC137 antibody is: synthetic peptide directed towards the N-terminal region of Human CCDC137. Synthetic peptide located within the following region: RRARGRQQVQLGKQRPAPWPGLRSKEKKKVNCKPKNQDEQEIPFRLREI
Formulation:	Liquid. Purified antibody supplied in 1x PBS buffer with 0.09% (w/v) sodium azide and 2% sucrose. <i>Note that this product is shipped as lyophilized powder to China customers.</i>
Purification:	Affinity Purified
Conjugation:	Unconjugated
Storage:	Store at -20°C as received.
Stability:	Stable for 12 months from date of receipt.
Predicted Protein Size:	33 kDa
Gene Name:	coiled-coil domain containing 137
Database Link:	<a href="#">NP_954981</a> <a href="#">Entrez Gene 339230 Human</a> <a href="#">Q6PK04</a>
Background:	The function of this protein remains unknown.
Synonyms:	RaRF
Note:	Immunogen Sequence Homology: Dog: 100%; Pig: 100%; Rat: 100%; Human: 100%; Mouse: 100%; Bovine: 100%; Guinea pig: 100%



[View online »](#)

**Product images:**

Host: Rabbit; Target Name: CCDC137; Sample  
Tissue: Jurkat Whole Cell lysates; Antibody  
Dilution: 1.0 ug/ml