

Product datasheet for TA334855

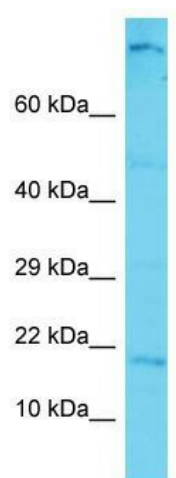
C12orf74 Rabbit Polyclonal Antibody

Product data:

| | |
|-------------------------|---|
| Product Type: | Primary Antibodies |
| Applications: | WB |
| Recommended Dilution: | WB |
| Reactivity: | Human |
| Host: | Rabbit |
| Isotype: | IgG |
| Clonality: | Polyclonal |
| Immunogen: | The immunogen for anti-C12orf74 antibody is: synthetic peptide directed towards the N-terminal region of Human C12orf74. Synthetic peptide located within the following region: SPTLRRRLRTRGCGTRQDAWQVTTWGSWGAPVGFPCYLSKSLPGSPKDSSH |
| Formulation: | Liquid. Purified antibody supplied in 1x PBS buffer with 0.09% (w/v) sodium azide and 2% sucrose. <i>Note that this product is shipped as lyophilized powder to China customers.</i> |
| Purification: | Affinity Purified |
| Conjugation: | Unconjugated |
| Storage: | Store at -20°C as received. |
| Stability: | Stable for 12 months from date of receipt. |
| Predicted Protein Size: | 19 kDa |
| Gene Name: | chromosome 12 open reading frame 74 |
| Database Link: | NP_001171568 Entrez Gene 338809 Human Q32Q52 |
| Background: | The function of this protein remains unknown. |
| Synonyms: | MGC125584 |
| Note: | Immunogen Sequence Homology: Horse: 100%; Human: 100%; Rabbit: 86% |



[View online »](#)

Product images:

Host: Rabbit; Target Name: C12orf74; Sample
Tissue: HeLa Whole cell lysates; Antibody Dilution:
1.0 ug/ml