

Product datasheet for **TA334853**

TREML4 Rabbit Polyclonal Antibody

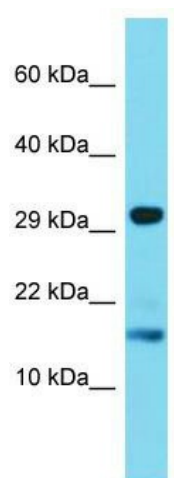
Product data:

Product Type:	Primary Antibodies
Applications:	WB
Recommended Dilution:	WB
Reactivity:	Human
Host:	Rabbit
Isotype:	IgG
Clonality:	Polyclonal
Immunogen:	The immunogen for anti-TREML4 antibody is: synthetic peptide directed towards the C-terminal region of Human TREML4. Synthetic peptide located within the following region: LPWLPSTSTVLITSPGTSVSGHPSINGSETRKSRAPACLGSGGPRFLVLVLC
Formulation:	Liquid. Purified antibody supplied in 1x PBS buffer with 0.09% (w/v) sodium azide and 2% sucrose. <i>Note that this product is shipped as lyophilized powder to China customers.</i>
Purification:	Affinity Purified
Conjugation:	Unconjugated
Storage:	Store at -20°C as received.
Stability:	Stable for 12 months from date of receipt.
Predicted Protein Size:	19 kDa
Gene Name:	triggering receptor expressed on myeloid cells like 4
Database Link:	NP_937796 Entrez Gene 285852 Human Q6UXN2
Background:	The function of this protein remains unknown.
Synonyms:	TLT-4; TLT4
Note:	Immunogen Sequence Homology: Human: 100%
Protein Families:	Druggable Genome



[View online »](#)

Product images:



Host: Rabbit; Target Name: TREML4; Sample
Tissue: Jurkat Whole Cell lysates; Antibody
Dilution: 1.0 ug/ml