

Product datasheet for TA334852

C3orf70 Rabbit Polyclonal Antibody

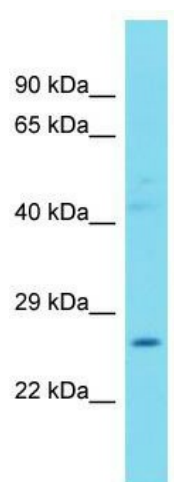
Product data:

Product Type:	Primary Antibodies
Applications:	WB
Recommended Dilution:	WB
Reactivity:	Human
Host:	Rabbit
Isotype:	IgG
Clonality:	Polyclonal
Immunogen:	The immunogen for anti-C3orf70 antibody is: synthetic peptide directed towards the C-terminal region of Human C3orf70. Synthetic peptide located within the following region: SKESNTPKIDHCSSPSSSEDSGINAIGAHYVESCDDETEEGAELSSEEDY
Formulation:	Liquid. Purified antibody supplied in 1x PBS buffer with 0.09% (w/v) sodium azide and 2% sucrose.
Purification:	Affinity Purified
Conjugation:	Unconjugated
Storage:	Store at -20°C as received.
Stability:	Stable for 12 months from date of receipt.
Predicted Protein Size:	27 kDa
Gene Name:	chromosome 3 open reading frame 70
Database Link:	NP_001020437 Entrez Gene 285382 Human A6NLC5
Background:	The function of this protein remains unknown.
Synonyms:	C3orf70
Note:	Immunogen Sequence Homology: Horse: 100%; Human: 100%; Bovine: 100%; Dog: 93%; Rabbit: 86%; Rat: 79%; Mouse: 79%



[View online »](#)

Product images:



Host: Rabbit; Target Name: C3orf70; Sample
Tissue: Placenta lysates; Antibody Dilution: 1.0
ug/ml