

## Product datasheet for TA334851

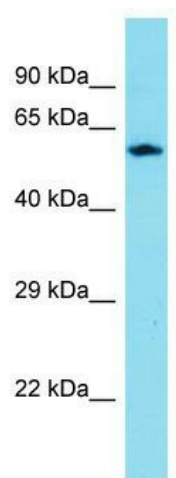
### CXXC11 (RTP5) Rabbit Polyclonal Antibody

#### Product data:

Product Type:	Primary Antibodies
Applications:	WB
Recommended Dilution:	WB
Reactivity:	Human
Host:	Rabbit
Isotype:	IgG
Clonality:	Polyclonal
Immunogen:	The immunogen for anti-CXXC11 antibody is synthetic peptide directed towards the C-terminal region of Human CXXC11. Synthetic peptide located within the following region: AFTDITEGKEKEGGLVTAGHDAPLEANAEGPITVSEGCITIPFAVFDVIK
Formulation:	Liquid. Purified antibody supplied in 1x PBS buffer with 0.09% (w/v) sodium azide and 2% sucrose. <i>Note that this product is shipped as lyophilized powder to China customers.</i>
Purification:	Affinity Purified
Conjugation:	Unconjugated
Storage:	Store at -20°C as received.
Stability:	Stable for 12 months from date of receipt.
Predicted Protein Size:	60 kDa
Gene Name:	receptor transporter protein 5 (putative)
Database Link:	<a href="#">NP_776182</a> <a href="#">Entrez Gene 285093 Human</a> <a href="#">Q14D33</a>
Background:	The function of this protein remains unknown.
Synonyms:	C2orf85; CXXC11; Z3CXXC5
Note:	Immunogen Sequence Homology: Human: 100%



[View online »](#)

**Product images:**

Host: Rabbit; Target Name: CXXC11; Sample  
Tissue: ACHN Whole cell lysates; Antibody  
Dilution: 1.0 ug/ml