

Product datasheet for TA334850

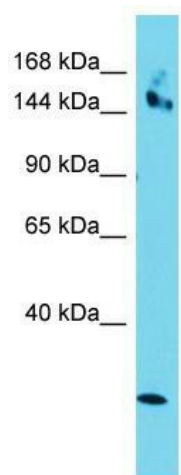
CCDC141 Rabbit Polyclonal Antibody

Product data:

Product Type:	Primary Antibodies
Applications:	WB
Recommended Dilution:	WB
Reactivity:	Human
Host:	Rabbit
Isotype:	IgG
Clonality:	Polyclonal
Immunogen:	The immunogen for anti-CCDC141 antibody is: synthetic peptide directed towards the middle region of Human CCDC141. Synthetic peptide located within the following region: ILDVKNEVYLMKNTMENQKAEREELSLRLAWQLKATESKPGKQQWAAFK
Formulation:	Liquid. Purified antibody supplied in 1x PBS buffer with 0.09% (w/v) sodium azide and 2% sucrose.
Purification:	Affinity Purified
Conjugation:	Unconjugated
Storage:	Store at -20°C as received.
Stability:	Stable for 12 months from date of receipt.
Predicted Protein Size:	174 kDa
Gene Name:	coiled-coil domain containing 141
Database Link:	NP_775919 Entrez Gene 285025 Human Q6ZP82
Background:	The function of this protein remains unknown.
Synonyms:	CAMDI
Note:	Immunogen Sequence Homology: Human: 100%; Pig: 92%; Horse: 92%; Bovine: 92%; Rabbit: 92%; Dog: 85%; Guinea pig: 83%; Mouse: 75%


[View online »](#)

Product images:



Host: Rabbit; Target Name: CCDC141; Sample
Tissue: HepG2 Whole Cell lysates; Antibody
Dilution: 1.0 ug/ml