

## Product datasheet for **TA334849**

### **C19orf75 (SIGLECL1) Rabbit Polyclonal Antibody**

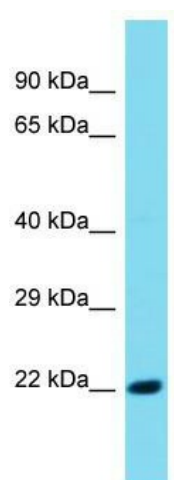
#### **Product data:**

Product Type:	Primary Antibodies
Applications:	WB
Recommended Dilution:	WB
Reactivity:	Human
Host:	Rabbit
Isotype:	IgG
Clonality:	Polyclonal
Immunogen:	The immunogen for anti-SIGLECL1 antibody is: synthetic peptide directed towards the C-terminal region of Human SIGLECL1. Synthetic peptide located within the following region: RKKQAKKAAAIRAKSSKVRASQELEMSLKPEEPGKPVVATFSESRILEK
Formulation:	Liquid. Purified antibody supplied in 1x PBS buffer with 0.09% (w/v) sodium azide and 2% sucrose. <i>Note that this product is shipped as lyophilized powder to China customers.</i>
Purification:	Affinity Purified
Conjugation:	Unconjugated
Storage:	Store at -20°C as received.
Stability:	Stable for 12 months from date of receipt.
Predicted Protein Size:	21 kDa
Gene Name:	SIGLEC family like 1
Database Link:	<a href="#">NP_775906</a> <a href="#">Entrez Gene 284369 Human</a> <a href="#">Q8N7X8</a>
Background:	The function of this protein remains unknown.
Synonyms:	C19orf75; SIGLEC23P; SIGLECP7
Note:	Immunogen Sequence Homology: Human: 100%; Yeast: 83%
Protein Families:	Transmembrane



[View online »](#)

## Product images:



Host: Rabbit; Target Name: SIGLECL1; Sample  
Tissue: Fetal Kidney lysates; Antibody Dilution: 1.0  
ug/ml