

Product datasheet for **TA334848**

METRNL Rabbit Polyclonal Antibody

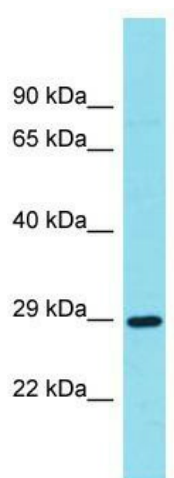
Product data:

Product Type:	Primary Antibodies
Applications:	WB
Recommended Dilution:	WB
Reactivity:	Human
Host:	Rabbit
Isotype:	IgG
Clonality:	Polyclonal
Immunogen:	The immunogen for anti-METRNL antibody is: synthetic peptide directed towards the N-terminal region of Human METRNL. Synthetic peptide located within the following region: LLLLLAGLLGGAGAQYSSDRCSWKGSGLTHEAHRKEVEQVYLRCAAGAVE
Formulation:	Liquid. Purified antibody supplied in 1x PBS buffer with 0.09% (w/v) sodium azide and 2% sucrose. <i>Note that this product is shipped as lyophilized powder to China customers.</i>
Purification:	Affinity Purified
Conjugation:	Unconjugated
Storage:	Store at -20°C as received.
Stability:	Stable for 12 months from date of receipt.
Predicted Protein Size:	29 kDa
Gene Name:	meteorin, glial cell differentiation regulator-like
Database Link:	NP_001004431 Entrez Gene 284207 Human Q641Q3
Background:	The function of this protein remains unknown.
Synonyms:	MGC99788
Note:	Immunogen Sequence Homology: Dog: 100%; Pig: 100%; Rat: 100%; Horse: 100%; Human: 100%; Bovine: 100%; Guinea pig: 100%; Rabbit: 85%; Mouse: 79%



[View online »](#)

Product images:



Host: Rabbit; Target Name: METRNL; Sample
Tissue: OVCAR-3 whole cell lysates; Antibody
Dilution: 1.0 ug/ml