

Product datasheet for **TA334846**

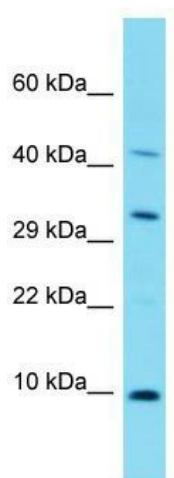
C17orf89 (NDUF88) Rabbit Polyclonal Antibody

Product data:

Product Type:	Primary Antibodies
Applications:	WB
Recommended Dilution:	WB
Reactivity:	Human
Host:	Rabbit
Isotype:	IgG
Clonality:	Polyclonal
Immunogen:	The immunogen for anti-C17orf89 antibody is: synthetic peptide directed towards the N-terminal region of Human C17orf89. Synthetic peptide located within the following region: VWGRVRSRLRAFPERLAACGAEAAAYGRCVQASTAPGGRLSKDFCAREFE
Formulation:	Liquid. Purified antibody supplied in 1x PBS buffer with 0.09% (w/v) sodium azide and 2% sucrose.
Purification:	Affinity Purified
Conjugation:	Unconjugated
Storage:	Store at -20°C as received.
Stability:	Stable for 12 months from date of receipt.
Predicted Protein Size:	8 kDa
Gene Name:	chromosome 17 open reading frame 89
Database Link:	NP_001079990 Entrez Gene 284184 Human A1L188
Background:	The function of this protein remains unknown.
Synonyms:	C17orf89
Note:	Immunogen Sequence Homology: Rat: 100%; Human: 100%; Mouse: 100%; Dog: 93%



[View online »](#)

Product images:

Host: Rabbit; Target Name: C17orf89; Sample Tissue: Fetal Lung lysates; Antibody Dilution: 1.0 ug/ml