

Product datasheet for **TA334845**

CFAP97D1 Rabbit Polyclonal Antibody

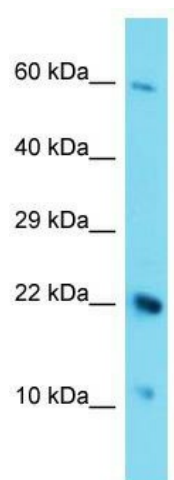
Product data:

Product Type:	Primary Antibodies
Applications:	WB
Recommended Dilution:	WB
Reactivity:	Human
Host:	Rabbit
Isotype:	IgG
Clonality:	Polyclonal
Immunogen:	The immunogen for anti-C17orf105 antibody is: synthetic peptide directed towards the middle region of Human C17orf105. Synthetic peptide located within the following region: QLCQKIANAHRGPAKVDCWNEYFSKSLNRETRNRELVRITMENQGILKRL
Formulation:	Liquid. Purified antibody supplied in 1x PBS buffer with 0.09% (w/v) sodium azide and 2% sucrose.
Purification:	Affinity Purified
Conjugation:	Unconjugated
Storage:	Store at -20°C as received.
Stability:	Stable for 12 months from date of receipt.
Predicted Protein Size:	19 kDa
Gene Name:	chromosome 17 open reading frame 105
Database Link:	NP_001129955 Entrez Gene 284067 Human B2RV13
Background:	The function of this protein remains unknown.
Synonyms:	FLJ43829
Note:	Immunogen Sequence Homology: Dog: 100%; Horse: 100%; Human: 100%; Bovine: 100%; Rabbit: 100%; Pig: 93%; Guinea pig: 93%; Mouse: 92%; Rat: 86%



[View online »](#)

Product images:



Host: Rabbit; Target Name: C17orf105; Sample
Tissue: HepG2 Whole Cell lysates; Antibody
Dilution: 1.0 ug/ml