

Product datasheet for **TA334843**

C16orf91 Rabbit Polyclonal Antibody

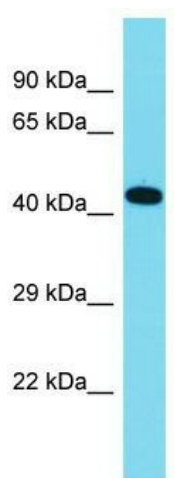
Product data:

Product Type:	Primary Antibodies
Applications:	WB
Recommended Dilution:	WB
Reactivity:	Human
Host:	Rabbit
Isotype:	IgG
Clonality:	Polyclonal
Immunogen:	The immunogen for anti-C16orf91 antibody is: synthetic peptide directed towards the C-terminal region of Human C16orf91. Synthetic peptide located within the following region: DCPGYACVLSTEGLGWWMGHLAMLIRVKAEQNLRSRSETAPRLALDVQGFH
Formulation:	Liquid. Purified antibody supplied in 1x PBS buffer with 0.09% (w/v) sodium azide and 2% sucrose. <i>Note that this product is shipped as lyophilized powder to China customers.</i>
Purification:	Affinity Purified
Conjugation:	Unconjugated
Storage:	Store at -20°C as received.
Stability:	Stable for 12 months from date of receipt.
Predicted Protein Size:	38 kDa
Gene Name:	chromosome 16 open reading frame 91
Database Link:	NP_001010878 Entrez Gene 283951 Human Q4G0I0
Background:	The function of this protein remains unknown.
Synonyms:	CCSMST1; gs103
Note:	Immunogen Sequence Homology: 0



[View online »](#)

Product images:



Host: Rabbit; Target Name: C16orf91; Sample
Tissue: Fetal Lung lysates; Antibody Dilution: 1.0
ug/ml