

Product datasheet for **TA334841**

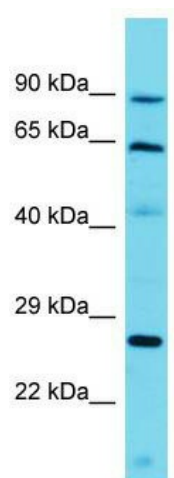
CCDC79 (TERB1) Rabbit Polyclonal Antibody

Product data:

Product Type:	Primary Antibodies
Applications:	WB
Recommended Dilution:	WB
Reactivity:	Human
Host:	Rabbit
Isotype:	IgG
Clonality:	Polyclonal
Immunogen:	The immunogen for anti-CCDC79 antibody is: synthetic peptide directed towards the C-terminal region of Human CCDC79. Synthetic peptide located within the following region: ISIQNTWKHLHADRIGRGSKAEDDKSHSRQLQSYKSHGVMSKACTNDDQ
Formulation:	Liquid. Purified antibody supplied in 1x PBS buffer with 0.09% (w/v) sodium azide and 2% sucrose. <i>Note that this product is shipped as lyophilized powder to China customers.</i>
Purification:	Affinity Purified
Conjugation:	Unconjugated
Storage:	Store at -20°C as received.
Stability:	Stable for 12 months from date of receipt.
Predicted Protein Size:	82 kDa
Gene Name:	telomere repeat binding bouquet formation protein 1
Database Link:	NP_001129977 Entrez Gene 283847 Human Q8NA31
Background:	The function of this protein remains unknown.
Synonyms:	CCDC79
Note:	Immunogen Sequence Homology: Human: 100%



[View online »](#)

Product images:

Host: Rabbit; Target Name: CCDC79; Sample
Tissue: Jurkat Whole Cell lysates; Antibody
Dilution: 1.0 ug/ml