

## Product datasheet for **TA334840**

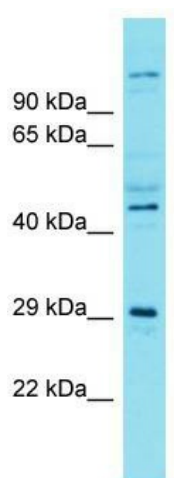
### SIAH3 Rabbit Polyclonal Antibody

#### Product data:

Product Type:	Primary Antibodies
Applications:	WB
Recommended Dilution:	WB
Reactivity:	Human (Predicted: Dog, Rabbit, Horse)
Host:	Rabbit
Isotype:	IgG
Clonality:	Polyclonal
Immunogen:	The immunogen for anti-SIAH3 antibody is: synthetic peptide directed towards the N-terminal region of Human SIAH3. Synthetic peptide located within the following region: YVSSRRRAVTQSAPEQGSFHPHLSHHHCHHRHHHHLRHHHAHPHLLHHQEA
Formulation:	Liquid. Purified antibody supplied in 1x PBS buffer with 0.09% (w/v) sodium azide and 2% sucrose. <i>Note that this product is shipped as lyophilized powder to China customers.</i>
Purification:	Affinity Purified
Conjugation:	Unconjugated
Storage:	Store at -20°C as received.
Stability:	Stable for 12 months from date of receipt.
Predicted Protein Size:	30 kDa
Gene Name:	siah E3 ubiquitin protein ligase family member 3
Database Link:	<a href="#">NP_942146</a> <a href="#">Entrez Gene 485454 Dog</a> <a href="#">Entrez Gene 283514 Human</a> <a href="#">Q8IW03</a>
Background:	The function of this protein remains unknown.
Synonyms:	FLJ39203
Note:	Immunogen Sequence Homology: Human: 100%; Horse: 93%; Dog: 92%; Rabbit: 79%



[View online »](#)

**Product images:**

Host: Rabbit; Target Name: SIAH3; Sample Tissue: Fetal Brain lysates; Antibody Dilution: 1.0 ug/ml