

Product datasheet for **TA334838**

SPRYD4 Rabbit Polyclonal Antibody

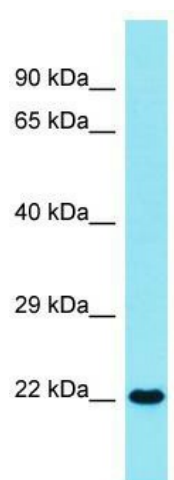
Product data:

Product Type:	Primary Antibodies
Applications:	WB
Recommended Dilution:	WB
Reactivity:	Human
Host:	Rabbit
Isotype:	IgG
Clonality:	Polyclonal
Immunogen:	The immunogen for anti-SPRYD4 antibody is: synthetic peptide directed towards the N-terminal region of Human SPRYD4. Synthetic peptide located within the following region: SLRLCRWGAKRLGVASTEAQRGVSFKLEEKTAHSSLALFRDDMGVKYGLV
Formulation:	Liquid. Purified antibody supplied in 1x PBS buffer with 0.09% (w/v) sodium azide and 2% sucrose.
Purification:	Affinity Purified
Conjugation:	Unconjugated
Storage:	Store at -20°C as received.
Stability:	Stable for 12 months from date of receipt.
Predicted Protein Size:	22 kDa
Gene Name:	SPRY domain containing 4
Database Link:	NP_997227 Entrez Gene 283377 Human Q8WW59
Background:	The function of this protein remains unknown.
Synonyms:	DKFZp686N0877
Note:	Immunogen Sequence Homology: Pig: 100%; Human: 100%; Rabbit: 100%; Dog: 93%; Rat: 93%; Horse: 93%; Mouse: 93%; Bovine: 93%; Guinea pig: 93%; Zebrafish: 77%
Protein Families:	Druggable Genome



[View online »](#)

Product images:



Host: Rabbit; Target Name: SPRYD4; Sample
Tissue: HT1080 Whole Cell lysates; Antibody
Dilution: 1.0 ug/ml