

Product datasheet for **TA334837**

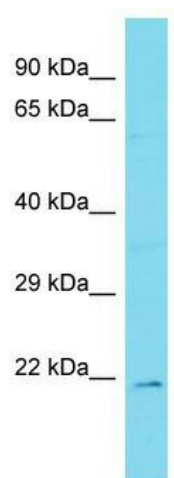
CCDC153 Rabbit Polyclonal Antibody

Product data:

Product Type:	Primary Antibodies
Applications:	WB
Recommended Dilution:	WB
Reactivity:	Human
Host:	Rabbit
Isotype:	IgG
Clonality:	Polyclonal
Immunogen:	The immunogen for anti-CCDC153 antibody is: synthetic peptide directed towards the middle region of Human CCDC153. Synthetic peptide located within the following region: RQCHALQEDMQTRSKQLEEEVKGLRGQLEACQREAAAAREEAEQALGERD
Formulation:	Liquid. Purified antibody supplied in 1x PBS buffer with 0.09% (w/v) sodium azide and 2% sucrose. <i>Note that this product is shipped as lyophilized powder to China customers.</i>
Purification:	Affinity Purified
Conjugation:	Unconjugated
Storage:	Store at -20°C as received.
Stability:	Stable for 12 months from date of receipt.
Predicted Protein Size:	23 kDa
Gene Name:	coiled-coil domain containing 153
Database Link:	NP_001138490 Entrez Gene 283152 Human Q494R4
Background:	The function of this protein remains unknown.
Synonyms:	MGC125447; MGC125448
Note:	Immunogen Sequence Homology: Human: 100%; Bovine: 79%; Rabbit: 79%; Mouse: 77%



[View online »](#)

Product images:

Host: Rabbit; Target Name: CCDC153; Sample
Tissue: HeLa Whole cell lysates; Antibody Dilution:
1.0 ug/ml