

Product datasheet for **TA334834**

TAS2R45 Rabbit Polyclonal Antibody

Product data:

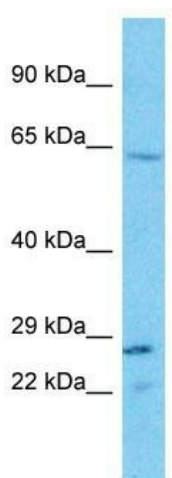
Product Type:	Primary Antibodies
Applications:	WB
Recommended Dilution:	WB
Reactivity:	Human
Host:	Rabbit
Isotype:	IgG
Clonality:	Polyclonal
Immunogen:	The immunogen for anti-TAS2R45 antibody is: synthetic peptide directed towards the C-terminal region of Human TAS2R45. Synthetic peptide located within the following region: MLANLVPFTVTLISFLLLVCSLCKHLKMKMLHGKGSQDPSTKVHIKVLQT
Formulation:	Liquid. Purified antibody supplied in 1x PBS buffer with 0.09% (w/v) sodium azide and 2% sucrose. <i>Note that this product is shipped as lyophilized powder to China customers.</i>
Purification:	Affinity Purified
Conjugation:	Unconjugated
Storage:	Store at -20°C as received.
Stability:	Stable for 12 months from date of receipt.
Predicted Protein Size:	32 kDa
Gene Name:	taste 2 receptor member 45
Database Link:	NP_795367 Entrez Gene 259291 Human
Background:	TAS2R45 is a receptor that may play a role in the perception of bitterness and is gustducin-linked. It may play a role in sensing the chemical composition of the gastrointestinal content. The activity of this receptor may stimulate alpha gustducin, mediate PLC-beta-2 activation and lead to the gating of TRPM5
Synonyms:	GPR59; T2R45; ZG24P
Note:	Immunogen Sequence Homology: Human: 100%; Horse: 86%; Bovine: 86%; Pig: 83%; Guinea pig: 83%



[View online »](#)

Protein Pathways: Taste transduction

Product images:



Host: Rabbit

Target Name: TAS2R45

Sample Tissue: HepG2 Cell Lysate

Antibody Dilution: 1.0 µg/ml

Host: Rabbit; Target Name: TAS2R45; Sample Tissue: HepG2 Whole Cell lysates; Antibody Dilution: 1.0 µg/ml