

Product datasheet for **TA334832**

SERPINA11 Rabbit Polyclonal Antibody

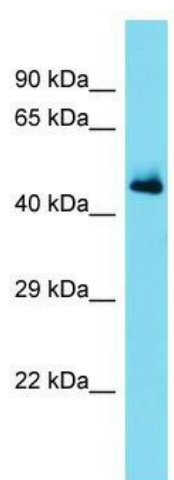
Product data:

Product Type:	Primary Antibodies
Applications:	WB
Recommended Dilution:	WB
Reactivity:	Human
Host:	Rabbit
Isotype:	IgG
Clonality:	Polyclonal
Immunogen:	The immunogen for anti-SERPINA11 antibody is: synthetic peptide directed towards the middle region of Human SERPINA11. Synthetic peptide located within the following region: TFMVLANYIFFKAKWKHPFSRYQTQKQESFFVDERTSLQVPMMHQKEMHR
Formulation:	Liquid. Purified antibody supplied in 1x PBS buffer with 0.09% (w/v) sodium azide and 2% sucrose.
Purification:	Affinity Purified
Conjugation:	Unconjugated
Storage:	Store at -20°C as received.
Stability:	Stable for 12 months from date of receipt.
Predicted Protein Size:	47 kDa
Gene Name:	serpin family A member 11
Database Link:	NP_001073920 Entrez Gene 256394 Human Q86U17
Background:	The function of this protein remains unknown.
Synonyms:	antiproteinase-like 2; antitrypsin); clade A (alpha-1 antiproteinase; member 11; serine (or cysteine) proteinase inhibitor; serpin peptidase inhibitor
Note:	Immunogen Sequence Homology: Dog: 100%; Human: 100%; Horse: 93%; Bovine: 93%; Pig: 86%; Rat: 86%; Mouse: 86%; Guinea pig: 83%; Rabbit: 79%
Protein Families:	Druggable Genome, Secreted Protein



[View online »](#)

Product images:



Host: Rabbit; Target Name: SERPINA11; Sample Tissue: Fetal Heart lysates; Antibody Dilution: 1.0 ug/ml