

Product datasheet for **TA334831**

GTL3B (NATD1) Rabbit Polyclonal Antibody

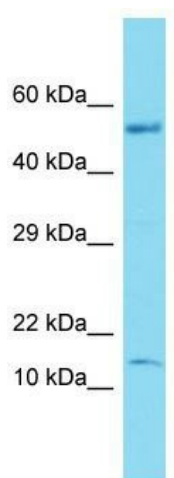
Product data:

Product Type:	Primary Antibodies
Applications:	WB
Recommended Dilution:	WB
Reactivity:	Human
Host:	Rabbit
Isotype:	IgG
Clonality:	Polyclonal
Immunogen:	The immunogen for anti-C17orf103 antibody is: synthetic peptide directed towards the N-terminal region of Human C17orf103. Synthetic peptide located within the following region: EQGCPIRVEHDRRRRQFTVRLNGCHDRAVLLYEYVGKRIVDLQHTEVPDA
Formulation:	Liquid. Purified antibody supplied in 1x PBS buffer with 0.09% (w/v) sodium azide and 2% sucrose.
Purification:	Affinity Purified
Conjugation:	Unconjugated
Storage:	Store at -20°C as received.
Stability:	Stable for 12 months from date of receipt.
Predicted Protein Size:	12 kDa
Gene Name:	N-acetyltransferase domain containing 1
Database Link:	NP_690878 Entrez Gene 256302 Human Q8N6N6
Background:	The function of this protein remains unknown.
Synonyms:	C17orf103; Gtlf3b
Note:	Immunogen Sequence Homology: Pig: 100%; Rat: 100%; Human: 100%; Bovine: 100%; Guinea pig: 100%; Mouse: 93%



[View online »](#)

Product images:



Host: Rabbit; Target Name: C17orf103; Sample Tissue: Fetal Brain lysates; Antibody Dilution: 1.0 ug/ml