

## Product datasheet for **TA334828**

### VXN Rabbit Polyclonal Antibody

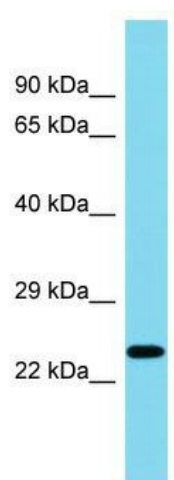
#### Product data:

Product Type:	Primary Antibodies
Applications:	WB
Recommended Dilution:	WB
Reactivity:	Human
Host:	Rabbit
Isotype:	IgG
Clonality:	Polyclonal
Immunogen:	The immunogen for anti-C8orf46 antibody is: synthetic peptide directed towards the C-terminal region of Human C8orf46. Synthetic peptide located within the following region: KKMTEEYPALPQGAEASLPLTGSASCGVPGILRKMWTRHKKKSEYVGATN
Formulation:	Liquid. Purified antibody supplied in 1x PBS buffer with 0.09% (w/v) sodium azide and 2% sucrose.
Purification:	Affinity Purified
Conjugation:	Unconjugated
Storage:	Store at -20°C as received.
Stability:	Stable for 12 months from date of receipt.
Predicted Protein Size:	22 kDa
Gene Name:	chromosome 8 open reading frame 46
Database Link:	<a href="#">NP_689978</a> <a href="#">Entrez Gene 254778 Human</a> <a href="#">Q8TAG6</a>
Background:	The function of this protein remains unknown.
Synonyms:	MGC33510
Note:	Immunogen Sequence Homology: Dog: 100%; Pig: 100%; Rat: 100%; Human: 100%; Mouse: 100%; Bovine: 100%; Rabbit: 100%; Guinea pig: 100%



[View online »](#)

## Product images:



Host: Rabbit; Target Name: C8orf46; Sample  
Tissue: Fetal Liver lysates; Antibody Dilution: 1.0  
ug/ml