

Product datasheet for **TA334827**

MAP1D (METAP1D) Rabbit Polyclonal Antibody

Product data:

Product Type:	Primary Antibodies
Applications:	WB
Recommended Dilution:	WB
Reactivity:	Human
Host:	Rabbit
Isotype:	IgG
Clonality:	Polyclonal
Immunogen:	The immunogen for anti-METAP1D antibody is: synthetic peptide directed towards the N-terminal region of Human METAP1D. Synthetic peptide located within the following region: LNHIYLHKQSSSQRRNFFRRQRDISHSIVLPAAVSSAHPVPKHIKKPD
Formulation:	Liquid. Purified antibody supplied in 1x PBS buffer with 0.09% (w/v) sodium azide and 2% sucrose. <i>Note that this product is shipped as lyophilized powder to China customers.</i>
Purification:	Affinity Purified
Conjugation:	Unconjugated
Storage:	Store at -20°C as received.
Stability:	Stable for 12 months from date of receipt.
Predicted Protein Size:	35 kDa
Gene Name:	methionyl aminopeptidase type 1D (mitochondrial)
Database Link:	NP_954697 Entrez Gene 254042 Human Q6UB28
Background:	The N-terminal methionine excision pathway is an essential process in which the N-terminal methionine is removed from many proteins, thus facilitating subsequent protein modification. In mitochondria, enzymes that catalyze this reaction are called methionine aminopeptidases.
Synonyms:	MAP 1D; MAP1D; MetAP 1D; Metap1I

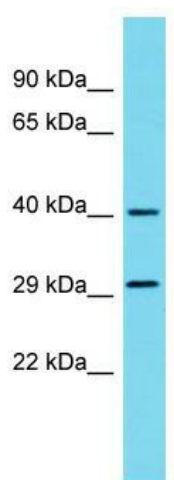


[View online »](#)

Note: Immunogen Sequence Homology: Pig: 100%; Rat: 100%; Horse: 100%; Human: 100%; Rabbit: 93%; Guinea pig: 93%; Dog: 86%; Goat: 86%; Bovine: 86%; Mouse: 85%

Protein Families: Druggable Genome

Product images:



Host: Rabbit; Target Name: METAP1D; Sample Tissue: 293T Whole Cell lysates; Antibody Dilution: 1.0 ug/ml