

Product datasheet for **TA334826**

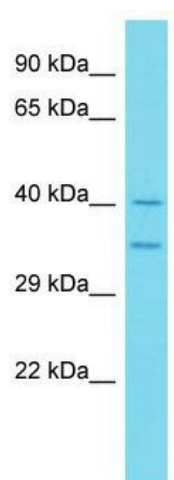
ASPHD1 Rabbit Polyclonal Antibody

Product data:

Product Type:	Primary Antibodies
Applications:	WB
Recommended Dilution:	WB
Reactivity:	Human
Host:	Rabbit
Isotype:	IgG
Clonality:	Polyclonal
Immunogen:	The immunogen for anti-ASPHD1 antibody is: synthetic peptide directed towards the N-terminal region of Human ASPHD1. Synthetic peptide located within the following region: YRLGSQDMQALGAGSRAGGVRGGPVGCEAGGPSPGGPGDPGEGPRTEGL
Formulation:	Liquid. Purified antibody supplied in 1x PBS buffer with 0.09% (w/v) sodium azide and 2% sucrose. <i>Note that this product is shipped as lyophilized powder to China customers.</i>
Purification:	Affinity Purified
Conjugation:	Unconjugated
Storage:	Store at -20°C as received.
Stability:	Stable for 12 months from date of receipt.
Predicted Protein Size:	40 kDa
Gene Name:	aspartate beta-hydroxylase domain containing 1
Database Link:	NP_859069 Entrez Gene 253982 Human Q5U4P2
Background:	The function of this protein remains unknown.
Synonyms:	aspartate beta-hydroxylase domain containing 1
Note:	Immunogen Sequence Homology: Human: 100%



[View online »](#)

Product images:

Host: Rabbit; Target Name: ASPHD1; Sample
Tissue: Fetal Heart lysates; Antibody Dilution: 1.0
ug/ml