

Product datasheet for TA334823

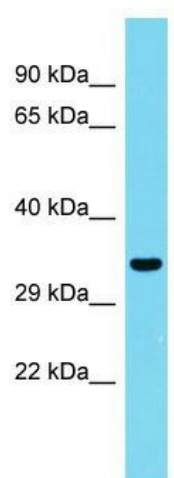
CCDC75 (GPATCH11) Rabbit Polyclonal Antibody

Product data:

Product Type:	Primary Antibodies
Applications:	WB
Recommended Dilution:	WB
Reactivity:	Human
Host:	Rabbit
Isotype:	IgG
Clonality:	Polyclonal
Immunogen:	The immunogen for anti-CCDC75 antibody is: synthetic peptide directed towards the N-terminal region of Human CCDC75. Synthetic peptide located within the following region: DSFINVQEDIRPGLPMLRQIREARRKEEKQQEANLKNRQKSLKEEEQERR
Formulation:	Liquid. Purified antibody supplied in 1x PBS buffer with 0.09% (w/v) sodium azide and 2% sucrose.
Purification:	Affinity Purified
Conjugation:	Unconjugated
Storage:	Store at -20°C as received.
Stability:	Stable for 12 months from date of receipt.
Predicted Protein Size:	30 kDa
Gene Name:	G-patch domain containing 11
Database Link:	NP_777591 Entrez Gene 253635 Human Q8N954
Background:	The function of this protein remains unknown.
Synonyms:	CCDC75; CENP-Y; CENPY
Note:	Immunogen Sequence Homology: Dog: 100%; Pig: 100%; Rat: 100%; Horse: 100%; Human: 100%; Rabbit: 100%; Guinea pig: 100%; Mouse: 93%; Bovine: 93%


[View online »](#)

Product images:



Host: Rabbit; Target Name: CCDC75; Sample
Tissue: Fetal Kidney lysates; Antibody Dilution: 1.0
ug/ml